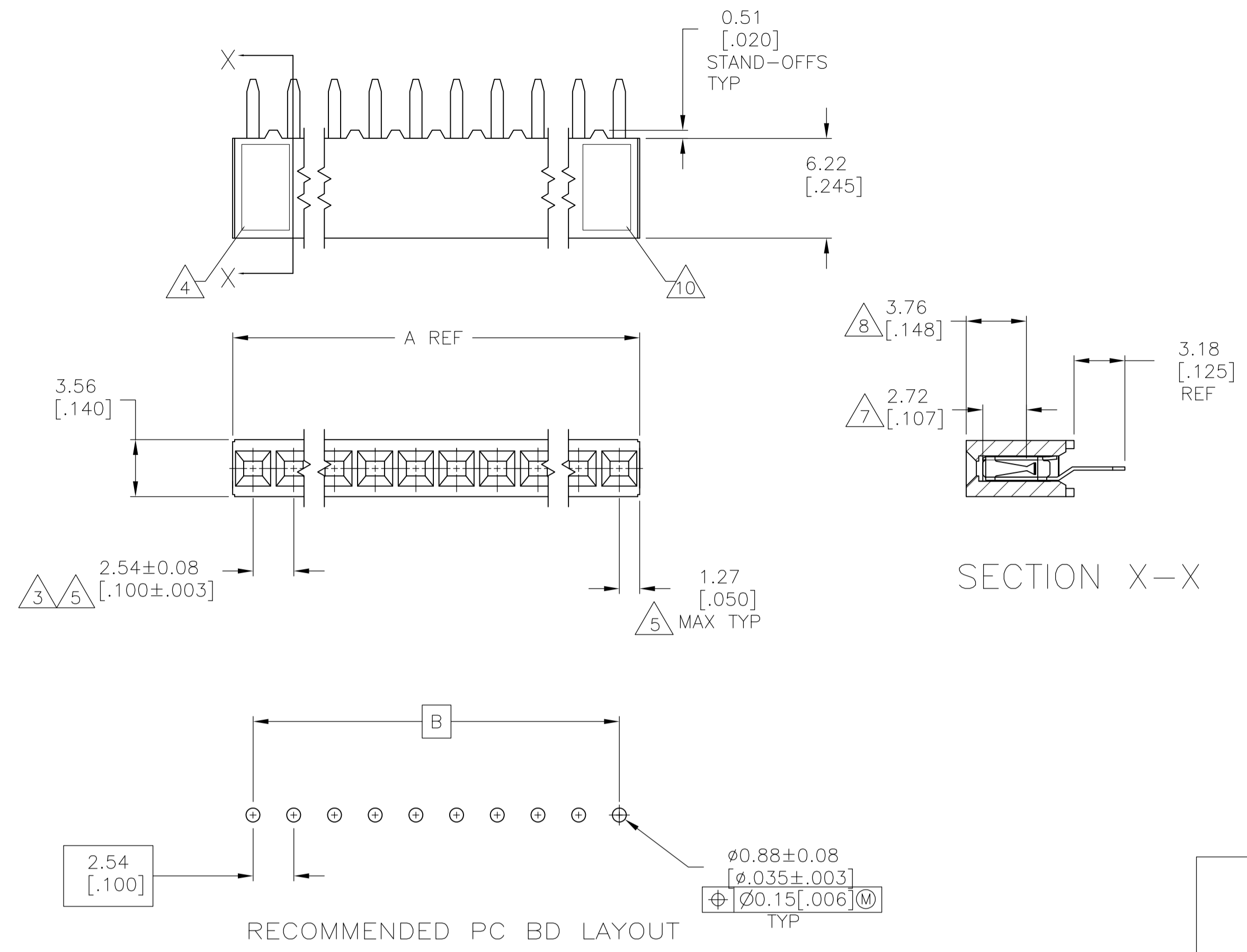


LOC		DIST		REVISIONS			
AD	00	REV	DATE	BY	CHK	APPV	
N1		REVISED PER ECO-08-019092	05AUG08	HMR	JO		
N2		REVISED PER ECO-10-000443	18JAN10	KK	AEG		



- 1 HOUSING: FLAME RETARDANT, GLASS FILLED, POLYESTER, COLOR: BLACK. CONTACT: PHOSPHOR BRONZE
- 2 CONTACT: DUPLEX PLATED 0.76μm[.000030] MIN GOLD IN CONTACT AREA, 3.81-7.62μm[.000150-.000300] BRIGHT TIN-LEAD ON LEADS ALL OVER 1.27μm[.000050] MIN NICKEL
- 3 THESE DIMENSIONS PERTAIN TO CAVITY CENTERLINES ONLY - NOT TO CONTACT LOCATIONS
- 4 PART NUMBER AND DATE CODE ARE MARKED IN APPROXIMATE LOCATION SHOWN.
- 5 TOLERANCE IS NON-CUMULATIVE.
- 6 2 POSITION DATE CODE IS MARKED OPPOSITE SIDE OF TE LOGO.
- 7 POINT-OF-MEASUREMENT DIMENSION FOR PLATING THICKNESS (INSIDE CONTACT BEAM).
- 8 POINT-OF-CONTACT DIMENSION.
- 9 NO PART NUMBER MARKING REQUIRED FOR THIS PART.
- 10 TE LOGO AND CSA LOGO ARE MOLDED INTO HOUSING.
- 11 CONTACT: DUPLEX PLATED 0.76μm[.000030] MIN GOLD IN CONTACT AREA, 3.81-7.62μm[.000150-.000300] MATTE TIN ON LEADS ALL OVER 1.27μm[.000050] MIN NICKEL
- 12 ROHS 2002/95/EC COMPLIANT.
- 13 OBSOLETE PARTS: OBSOLETE CIS STREAMLINING PER D.RENAUD/D.SINISI

FINISH	B	A	NO OF POSN	PART NUMBER
9	2.54 [.100]	5.08 [.200]	2	8-535541-9
9	99.06 [3.900]	101.60 [4.000]	40	8-535541-8
9	96.52 [3.800]	99.06 [3.900]	39	8-535541-7
9	93.98 [3.700]	96.52 [3.800]	38	8-535541-6
9	91.44 [3.600]	93.98 [3.700]	37	8-535541-5
9	88.90 [3.500]	91.44 [3.600]	36	8-535541-4
9	86.36 [3.400]	88.90 [3.500]	35	8-535541-3
9	83.82 [3.300]	86.36 [3.400]	34	8-535541-2
9	81.28 [3.200]	83.82 [3.300]	33	8-535541-1
9	78.74 [3.100]	81.28 [3.200]	32	8-535541-0
9	76.20 [3.000]	78.74 [3.100]	31	7-535541-9
9	73.66 [2.900]	76.20 [3.000]	30	7-535541-8
9	71.12 [2.800]	73.66 [2.900]	29	7-535541-7
9	68.58 [2.700]	71.12 [2.800]	28	7-535541-6
9	66.04 [2.600]	68.58 [2.700]	27	7-535541-5
9	63.50 [2.500]	66.04 [2.600]	26	7-535541-4
9	60.96 [2.400]	63.50 [2.500]	25	7-535541-3
9	58.42 [2.300]	60.96 [2.400]	24	7-535541-2
9	55.88 [2.200]	58.42 [2.300]	23	7-535541-1
9	53.34 [2.100]	55.88 [2.200]	22	7-535541-0
9	50.80 [2.000]	53.34 [2.100]	21	6-535541-9
9	48.26 [1.900]	50.80 [2.000]	20	6-535541-8
9	45.72 [1.800]	48.26 [1.900]	19	6-535541-7
9	43.18 [1.700]	45.72 [1.800]	18	6-535541-6
9	40.64 [1.600]	43.18 [1.700]	17	6-535541-5
9	38.10 [1.500]	40.64 [1.600]	16	6-535541-4
9	35.56 [1.400]	38.10 [1.500]	15	6-535541-3
9	33.02 [1.300]	35.56 [1.400]	14	6-535541-2
9	30.48 [1.200]	33.02 [1.300]	13	6-535541-1
9	27.94 [1.100]	30.48 [1.200]	12	6-535541-0
9	25.40 [1.000]	27.94 [1.100]	11	5-535541-9
9	22.86 [.900]	25.40 [1.000]	10	5-535541-8
9	20.32 [.800]	22.86 [.900]	9	5-535541-7
9	17.78 [.700]	20.32 [.800]	8	5-535541-6
9	15.24 [.600]	17.78 [.700]	7	5-535541-5
9	12.70 [.500]	15.24 [.600]	6	5-535541-4
9	10.16 [.400]	12.70 [.500]	5	5-535541-3
9	7.62 [.300]	10.16 [.400]	4	5-535541-2
9	5.08 [.200]	7.62 [.300]	3	5-535541-1

FINISH	B	A	NO OF POSN	PART NUMBER
9	2.54 [.100]	5.08 [.200]	2	3-535541-9
9	99.06 [3.900]	101.60 [4.000]	40	3-535541-8
9	96.52 [3.800]	99.06 [3.900]	39	3-535541-7
9	93.98 [3.700]	96.52 [3.800]	38	3-535541-6
9	91.44 [3.600]	93.98 [3.700]	37	3-535541-5
9	88.90 [3.500]	91.44 [3.600]	36	3-535541-4
9	86.36 [3.400]	88.90 [3.500]	35	3-535541-3
9	83.82 [3.300]	86.36 [3.400]	34	3-535541-2
9	81.28 [3.200]	83.82 [3.300]	33	3-535541-1
9	78.74 [3.100]	81.28 [3.200]	32	3-535541-0
9	76.20 [3.000]	78.74 [3.100]	31	2-535541-9
9	73.66 [2.900]	76.20 [3.000]	30	2-535541-8
9	71.12 [2.800]	73.66 [2.900]	29	2-535541-7
9	68.58 [2.700]	71.12 [2.800]	28	2-535541-6
9	66.04 [2.600]	68.58 [2.700]	27	2-535541-5
9	63.50 [2.500]	66.04 [2.600]	26	2-535541-4
9	60.96 [2.400]	63.50 [2.500]	25	2-535541-3
9	58.42 [2.300]	60.96 [2.400]	24	2-535541-2
9	55.88 [2.200]	58.42 [2.300]	23	2-535541-1
9	53.34 [2.100]	55.88 [2.200]	22	2-535541-0
9	50.80 [2.000]	53.34 [2.100]	21	1-535541-9
9	48.26 [1.900]	50.80 [2.000]	20	1-535541-8
9	45.72 [1.800]	48.26 [1.900]	19	1-535541-7
9	43.18 [1.700]	45.72 [1.800]	18	1-535541-6
9	40.64 [1.600]	43.18 [1.700]	17	1-535541-5
9	38.10 [1.500]	40.64 [1.600]	16	1-535541-4
9	35.56 [1.400]	38.10 [1.500]	15	1-535541-3
9	33.02 [1.300]	35.56 [1.400]	14	1-535541-2
9	30.48 [1.200]	33.02 [1.300]	13	1-535541-1
9	27.94 [1.100]	30.48 [1.200]	12	1-535541-0
9	25.40 [1.000]	27.94 [1.100]	11	535541-9
9	22.86 [.900]	25.40 [1.000]	10	535541-8
9	20.32 [.800]	22.86 [.900]	9	535541-7
9	17.78 [.700]	20.32 [.800]	8	535541-6
9	15.24 [.600]	17.78 [.700]	7	535541-5
9	12.70 [.500]	15.24 [.600]	6	535541-4
9	10.16 [.400]	12.70 [.500]	5	535541-3
9	7.62 [.300]	10.16 [.400]	4	535541-2
9	5.08 [.200]	7.62 [.300]	3	535541-1

OBSOLETE

OBSOLETE

OBSOLETE

OBSOLETE

THIS DRAWING IS A CONTROLLED DOCUMENT.

DIMENSIONS: mm [INCHES]

TOLERANCES UNLESS OTHERWISE SPECIFIED:

0 PL	± .005
1 PL	± .005
2 PL	± .005
3 PL	± .005
4 PL	± .005
ANGLES	± .005

MATERIAL: FINISH

FINISH: B, A

NO OF POSN: 11-40

PART NUMBER: 535541-1 to 9

THIS DRAWING IS A CONTROLLED DOCUMENT.

DIN M. BINNER OSNOV02

CHK J. JOLSON OSNOV02

APPV J. JOLSON OSNOV02

NAME: J. JOLSON

PRODUCT SPEC: 108-25022

APPLICATION SPEC: 114-25018

SIZE: A1

SCALE: 4:1

SHEET: 1 of 1

REV: N2